

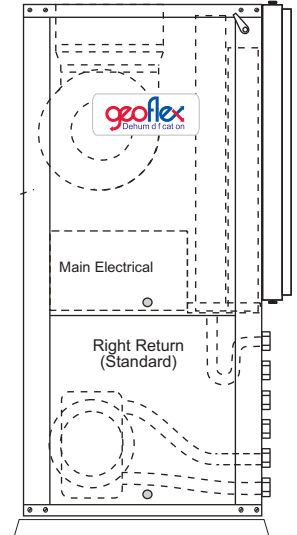
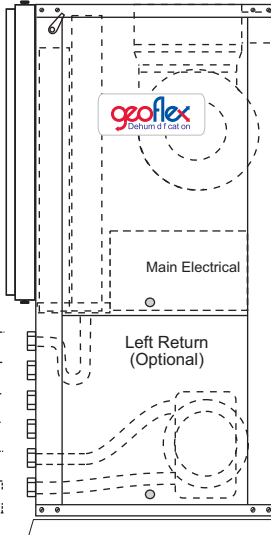
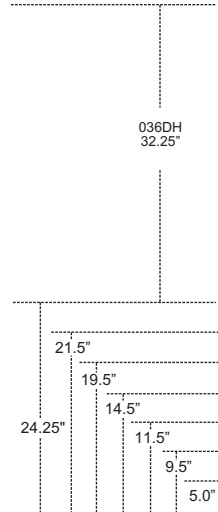
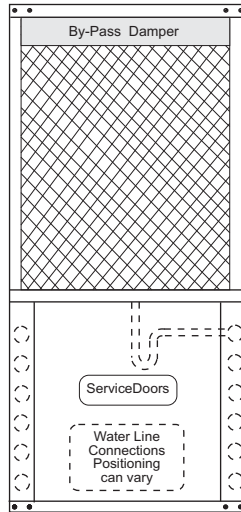
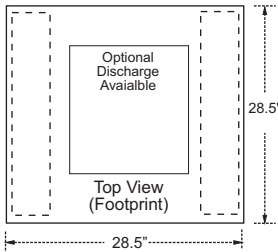
Technical Specifications

Geoflex Dehumidification System
Model 036 - 410A - Top Discharge

Available Options
Straight Thru, Top or Bottom Air Discharge
Pumps can be Built-in, pre-wired, pre-fused & pre-controlled
Partial Hot Water(s) c/w Internal Pump & High Limit Switch
Demand Hot Water(s) c/w Internal Pump, if required
10, 15, 20K Back-up/emergency heater available
Web Based Monitoring System
Flexible Orientation, air discharge, water connections
Diagnostic LED Function Light Array
K-Type ThermoProbes for simpler in field diagnostics
External DX Condensor
100% Internal Water Condensor
Proportional or 100% Water Reheat Systems
Cupronickel and Double Wall Vented Coils for specialized apps.

Elements	
Description	Type
Refrigerant	R410A
Base Unit Refrigerant Charge	10° F Superheat on Base Unit
Compressor	Scroll
Blower	Direct Drive
Air Coil Coating	Baked Acrylic Process
Condensate Pan	Anti-Corrosion Coated
Internal Air Reheat Condensor	DX
Optional Pool Reheat Condensor	Co-axial
Optional Water Condensor	Co-Axial
Base Unit Weight	
Base Unit Shipping Weight	

Standard Features	
Internal Piping	All Internal Refrigeration Piping is Insulated to Reduce Noise and Potential Pipe Degradation
Air Coils	Air Coils and internal components are coated and baked with an Acrylic Coating
Low Noise Package	1" acoustical insulation & all internal refrigeration lines are fully insulated to reduce noise potential.
Electronic Diagnostics	On board fault Diagnostics
Cabinet	A Separator Plate is used between the Air and Refrigeration Section
Service & Maintenance	Service Doors Surround System
Refrigeration Section	An Internal Negative Pressure Port is incorporated to Reduce Heat or Condensation Build-up.
Service Switches	Independent, Low & High Pressure & Low Flow c/w HP & LP Memory
Freon Service	Bi-flow Filter/Drier & Moisture Indicating Sight Glass
Evaporator Construction	All Evaporator Coils are Insulated to avoid Condensation Rusting
Field Adaption	Designed to maximize field adaptability Field Positionable Condensate Line



- Geoflex Advanced Dehumidification Systems
- Are designed within a modularized format to offer optimal configuration capabilities with consideration to efficiency, functionality, service & field adaption opportunities.
 - Can be ordered in virtually any configuration, vertical, horizontal, top, bottom or straight thru discharge, etc.
 - Can be ordered/ designed to exact project retrofit or new design match with a myriad of options.

410A Single Step Dehumidification Performance Data													
Model	Fan Motor Type	Spd	Air Temp °F	RH 50%			RH 55%			RH 60%			Flow Indoor Air CFM
				Mositure Removal lbs/hr	Sensible Cooling Btuh	Total Capacity Btuh	Mositure Rem oval lbs/hr	Sensible Cooling Btuh	Total Capacity Btuh	Mositure Removal lbs/hr	Sensible Cooling Btuh	Total Capacity Btuh	
036	PSC	Full	80	8.6	18,585	27,450	9.4	17,771	27,822	11.3	17,505	28,804	1,200
	PSC	Full	82	8.9	18,040	26,812	10.7	17,373	27,332	11.7	16,850	27,960	
	PSC	Full	84	10.9	17,505	26,185	13.1	16,915	26,769	14.3	16,336	27,299	

Single Step, 410A Electrical Data														
Model	Voltage Code	Voltage	Min/Max Voltage	Compressor			Blower Hp	Blower FLA	Total Unit FLA	Min Circuit Amps	Max Fuse/HACR	Supply Wire		
				RLA	LRA	LRA*						Min AWG	Max Ft (M)	
36	A	208-230/60/1	197/254	14.1	73.0	25.6	.5	3.8	18.4	22.1	30	12	77	(23.5)
	C	208-230/60/3	197/254	8.9	58.0		.5	2.8	12.2	14.7	20	14	70	(21.4)
	D	460/60/3	414/506	4.2	28.0		.5	1.3	6.0	7.2	10	14	469	(143.0)
	E	575/60/3	518/633	3.5	24.0		.5	1.0	5.0	6.0	10	14	700	(213.5)

Notes: LRA* estimated with optional "Secure Start" installed (208-230/60/1)
HACR circuit breaker in USA only All fuses Class RK-5

Wire length based on higher if 2 voltages, one way 2.0% voltage drop
Wire size based on 60°C copper conductor & minimum circuit ampacity



Geoflex Systems are CSA approved
GF-DH-SS-TD-036-R410A-11-07-11
all rights reserved ©2006 geoflex systems inc.
Due to ongoing research and development Geoflex reserves the right to change or alter specifications and configurations without notice!

Plant Office:
517 McCormick Blvd., London, Ontario N5W 4C8
Phone: 519.488.1653 Fax: 519.913.1259
Email: plant@geoflexsystems.com

Administration Office:
#1, 301 Pakwa Pl., Saskatoon, Sk, S7L 6A3
Phone: 306.668.0090 Fax: 306.668.0049
Email: admin@geoflexsystems.com

www.geoflexsystems.com

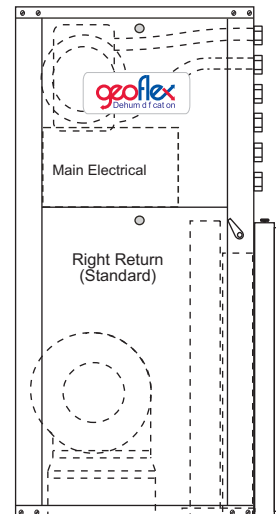
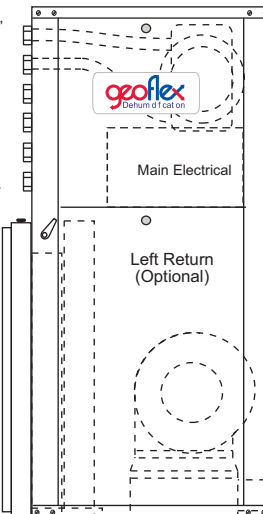
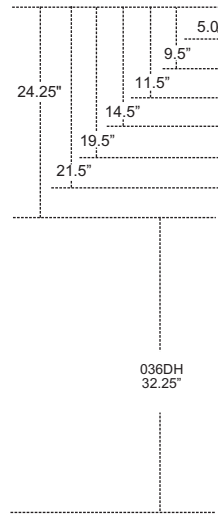
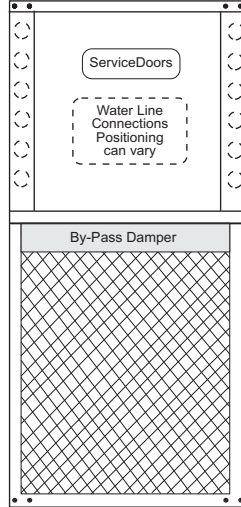
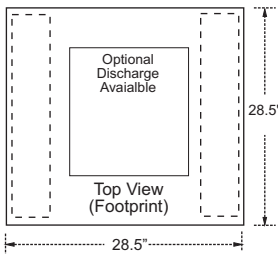
Technical Specifications

Geoflex Dehumidification System
Model 036 - 410A - Bottom Discharge

Available Options
Straight Thru, Top or Bottom Air Discharge
Pumps can be Built-in, pre-wired, pre-fused & pre-controlled
Partial Hot Water(s) c/w Internal Pump & High Limit Switch
Demand Hot Water(s) c/w Internal Pump, if required
10, 15, 20K Back-up/emergency heater available
Web Based Monitoring System
Flexible Orientation, air discharge, water connections
Diagnostic LED Function Light Array
K-Type ThermoProbes for simpler in field diagnostics
External DX Condensor
100% Internal Water Condensor
Proportional or 100% Water Reheat Systems
Cupronickel and Double Wall Vented Coils for specialized apps.

Elements	
Description	Type
Refrigerant	R410A
Base Unit Refrigerant Charge	10° F Superheat on Base Unit
Compressor	Scroll
Blower	Direct Drive
Air Coil Coating	Baked Acrylic Process
Condensate Pan	Anti-Corrosion Coated
Internal Air Reheat Condensor	DX
Optional Pool Reheat Condensor	Co-axial
Optional Water Condensor	Co-Axial
Base Unit Weight	
Base Unit Shipping Weight	

Standard Features	
Internal Piping	All Internal Refrigeration Piping is Insulated to Reduce Noise and Potential Pipe Degradation
Air Coils	Air Coils and internal components are coated and baked with an Acrylic Coating
Low Noise Package	1" acoustical insulation & all internal refrigeration lines are fully insulated to reduce noise potential.
Electronic Diagnostics	On board fault Diagnostics
Cabinet	A Separator Plate is used between the Air and Refrigeration Section
Service & Maintenance	Service Doors Surround System
Refrigeration Section	An Internal Negative Pressure Port is incorporated to Reduce Heat or Condensation Build-up.
Service Switches	Independant, Low & High Pressure & Low Flow c/w HP & LP Memory
Freon Service	Bi-flow Filter/Drier & Moisture Indicating Sight Glass
Evaporator Construction	All Evaporator Coils are Insulated to avoid Condensation Rusting
Field Adaption	Designed to maximize field adaptability Field Positionable Condensate Line



- Geoflex Advanced Dehumidification Systems
- Are designed within a modularized format to offer optimal configuration capabilities with consideration to efficiency, functionality, service & field adaption opportunities.
 - Can be ordered in virtually any configuration, vertical, horizontal, top, bottom or straight thru discharge, etc.
 - Can be ordered/ designed to exact project retrofit or new design match with a myriad of options.

410A Single Step Dehumidification Performance Data													
Model	Fan Motor Type	Spd	Air Temp °F	RH 50%			RH 55%			RH 60%			Flow Indoor Air CFM
				Mositure Removal lbs/hr	Sensible Cooling Btuh	Total Capacity Btuh	Mositure Rem oval lbs/hr	Sensible Cooling Btuh	Total Capacity Btuh	Mositure Removal lbs/hr	Sensible Cooling Btuh	Total Capacity Btuh	
036	PSC	Full	80	8.6	18,585	27,450	9.4	17,771	27,822	11.3	17,505	28,804	1,200
	PSC	Full	82	8.9	18,040	26,812	10.7	17,373	27,332	11.7	16,850	27,960	
	PSC	Full	84	10.9	17,505	26,185	13.1	16,915	26,769	14.3	16,336	27,299	

Single Step, 410A Electrical Data															
Model	Voltage Code	Voltage	Min/Max Voltage	Compressor			Blower Hp	Blower FLA	Total Unit FLA	Min Circuit Amps	Max Fuse/HACR	Supply Wire			
				RLA	LRA	LRA*						Min AWG	Max Ft (M)		
36	A	208-230/60/1	197/254	14.1	73.0	25.6	.5	3.8	18.4	22.1	30	12	77	(23.5)	
	C	208-230/60/3	197/254	8.9	58.0		.5	2.8	12.2	14.7	20	14	70	(21.4)	
	D	460/60/3	414/506	4.2	28.0		.5	1.3	6.0	7.2	10	14	469	(143.0)	
	E	575/60/3	518/633	3.5	24.0		.5	1.0	5.0	6.0	10	14	700	(213.5)	

Notes: LRA* estimated with optional "Secure Start" installed (208-230/60/1)
HACR circuit breaker in USA only All fuses Class RK-5

Wire length based on higher if 2 voltages, one way 2.0% voltage drop
Wire size based on 60°C copper conductor & minimum circuit ampacity



Geoflex Systems are CSA approved
GF-DH-SS-BD-036-R410A-11-07-11
all rights reserved ©2006 geoflex systems inc.
Due to ongoing research and development Geoflex reserves the right to change or alter specifications and configurations without notice!

Plant Office:
517 McCormick Blvd., London, Ontario N5W 4C8
Phone: 519.488.1653 Fax: 519.913.1259
Email: plant@geoflexsystems.com

Administration Office:
#1, 301 Pakwa Pl., Saskatoon, Sk, S7L 6A3
Phone: 306.668.0090 Fax: 306.668.0049
Email: admin@geoflexsystems.com

www.geoflexsystems.com

Technical Specifications

Geoflex Dehumidification System
Model 036 - 410A - Horizontal

Available Options
Straight Thru, Top or Bottom Air Discharge
Pumps can be Built-in, pre-wired, pre-fused & pre-controlled
Partial Hot Water(s) c/w Internal Pump & High Limit Switch
Demand Hot Water(s) c/w Internal Pump, if required
10, 15, 20K Back-up/emergency heater available
Web Based Monitoring System
Flexible Orientation, air discharge, water connections
Diagnostic LED Function Light Array
K-Type ThermoProbes for simpler in field diagnostics
External DX Condensor
100% Internal Water Condensor
Proportional or 100% Water Reheat Systems
Cupronickel and Double Wall Vented Coils for specialized apps.

Elements	
Description	Type
Refrigerant	R410A
Base Unit Refrigerant Charge	10° F Superheat on Base Unit
Compressor	Scroll
Blower	Direct Drive
Air Coil Coating	Baked Acrylic Process
Condensate Pan	Anti-Corrosion Coated
Internal Air Reheat Condensor	DX
Optional Pool Reheat Condensor	Co-axial
Optional Water Condensor	Co-Axial
Base Unit Weight	
Base Unit Shipping Weight	

Standard Features	
Internal Piping	All Internal Refrigeration Piping is Insulated to Reduce Noise and Potential Pipe Degradation
Air Coils	Air Coils and internal components are coated and baked with an Acrylic Coating
Low Noise Package	1" acoustical insulation & all internal refrigeration lines are fully insulated to reduce noise potential.
Electronic Diagnostics	On board fault Diagnostics
Cabinet	A Separator Plate is used between the Air and Refrigeration Section
Service & Maintenance	Service Doors Surround System
Refrigeration Section	An Internal Negative Pressure Port is incorporated to Reduce Heat or Condensation Build-up.
Service Switches	Independant, Low & High Pressure & Low Flow c/w HP & LP Memory
Freon Service	Bi-flow Filter/Drier & Moisture Indicating Sight Glass
Evaporator Construction	All Evaporator Coils are Insulated to avoid Condensation Rusting
Field Adaption	Designed to maximize field adaptability Field Positionable Condensate Line

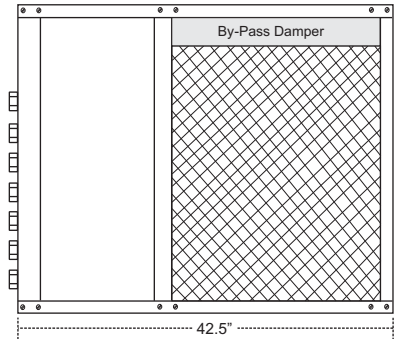
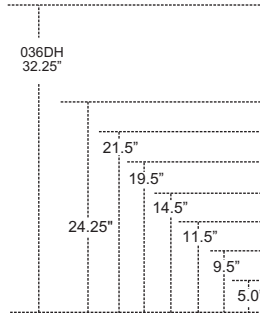
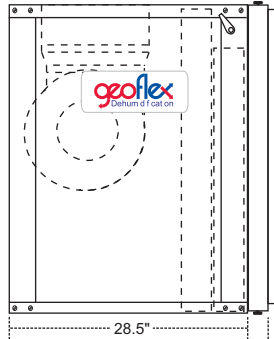
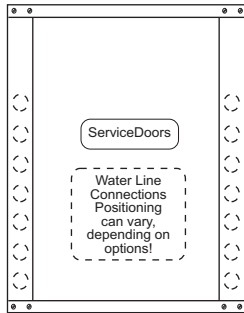
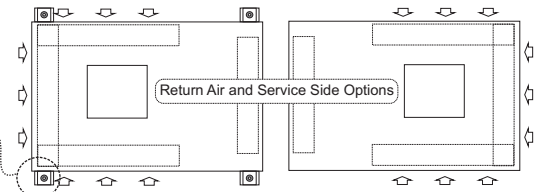
Geoflex Advanced Dehumidification Systems

- Are designed within a modularized format to offer optimal configuration capabilities with consideration to efficiency, functionality, service & field adaption opportunities.
- Can be ordered in virtually any configuration, vertical, horizontal, top, bottom or straight thru discharge, etc.
- Can be ordered/designed to exact project retrofit or new design match with a myriad of options.

Notes:

- A 6" Space must be left under the system to allow for a condensate drain trap.
- Much consideration must be given to noise, as horizontal units are commonly hung above drop ceilings in office spaces
- Back-up/Emergency Plenum Heaters can be built in with top and bottom discharge, all other discharge options would be built on.

Optional Hanging Bracket Detail



410A Single Step Dehumidification Performance Data													
Model	Fan Motor Type	Spd	Air Temp °F	RH 50%			RH 55%			RH 60%			Flow Indoor Air CFM
				Mositure Removal lbs/hr	Sensible Cooling Btuh	Total Capacity Btuh	Mositure Removal lbs/hr	Sensible Cooling Btuh	Total Capacity Btuh	Mositure Removal lbs/hr	Sensible Cooling Btuh	Total Capacity Btuh	
036	PSC	Full	80	8.6	18,585	27,450	9.4	17,771	27,822	11.3	17,505	28,804	1,200
	PSC	Full	82	8.9	18,040	26,812	10.7	17,373	27,332	11.7	16,850	27,960	
	PSC	Full	84	10.9	17,505	26,185	13.1	16,915	26,769	14.3	16,336	27,299	

Single Step, 410A Electrical Data															
Model	Voltage Code	Voltage	Min/Max Voltage	Compressor			Blower Hp	Blower FLA	Total Unit FLA	Min Circuit Amps	Max Fuse/HACR	Supply Wire			
				RLA	LRA	LRA*						Min AWG	Max Ft (M)		
36	A	208-230/60/1	197/254	14.1	73.0	25.6	.5	3.8	18.4	22.1	30	12	77	(23.5)	
	C	208-230/60/3	197/254	8.9	58.0		.5	2.8	12.2	14.7	20	14	70	(21.4)	
	D	460/60/3	414/506	4.2	28.0		.5	1.3	6.0	7.2	10	14	469	(143.0)	
	E	575/60/3	518/633	3.5	24.0		.5	1.0	5.0	6.0	10	14	700	(213.5)	

Notes: LRA* estimated with optional "Secure Start" installed (208-230/60/1)
HACR circuit breaker in USA only All fuses Class RK-5

Wire length based on higher if 2 voltages, one way 2.0% voltage drop
Wire size based on 60°C copper conductor & minimum circuit ampacity



Geoflex Systems are CSA approved
GF-DH-SS-HZ-036-R410A-11-07-11
all rights reserved ©2006 geoflex systems inc.
Due to ongoing research and development Geoflex reserves the right to change or alter specifications and configurations without notice!

Plant Office:
517 McCormick Blvd., London, Ontario N5W 4C8
Phone: 519.488.1653 Fax: 519.913.1259
Email: plant@geoflexsystems.com

Administration Office:
#1, 301 Pakwa Pl., Saskatoon, Sk, S7L 6A3
Phone: 306.668.0090 Fax: 306.668.0049
Email: admin@geoflexsystems.com

www.geoflexsystems.com